

# can-am®



**Apparel and Riding Gear**

**2024**

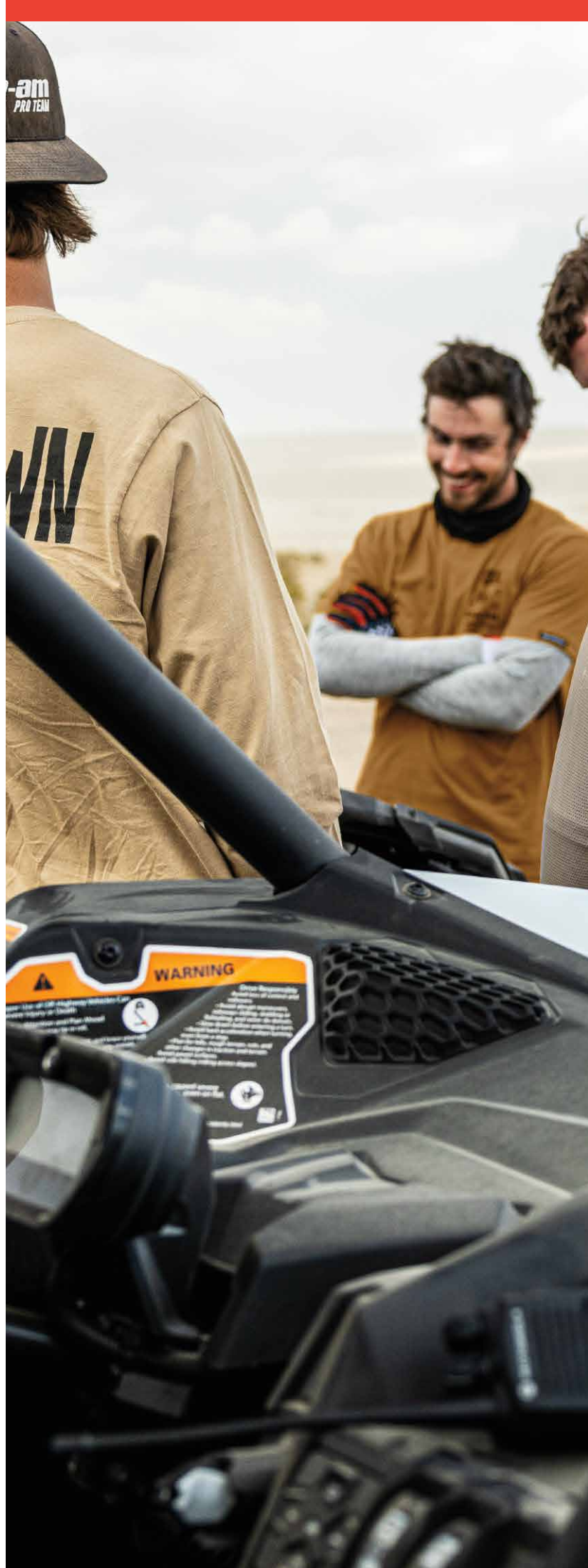
Helmets, Goggles, Technical and Casual Wear

# TABLE OF CONTENTS

Cam-Am x FastHouse	4
Helmets	9
Goggles	11
Expedition Collection	13
Mud Gear	14
Neckwear	15
Jersey	16
Performance Collection	17
Gloves	18
Utility Collection	20
Woodsman Collection	21
Premium Collection	24
Signature Collection	24
Headwear	26
Kid's Collection	27
Communication Systems	28
Bag	28
Play & Licensing Products	29
Men's Casual Jackets	31
Highpants	31
Jersey	32
Men's Sweatshirts	33
T-shirt	33
Casual Wear	34
Headwear	34
How to Measure	36

**CANAMOFFROAD.COM**

© 2023 Bombardier Recreational Products Inc. (BRP). All rights reserved. ®, TM and the BRP logo are trademarks of BRP or its affiliates. †All other trademarks are the property of their respective owners. BRP reserves the right to discontinue or change specifications, prices, designs, features, models or equipment without incurring obligation. Some models depicted may include optional equipment. Product's performance may vary depending on weather, temperature, altitude, driving ability and driver/passenger weight. BRP recommends that all ATV-SSV drivers take a training course. See your dealer. ATVs and SSVs can be hazardous to operate. Never exceed the ATV-SSV's passenger capacity. All adult model ATVs are meant to be used by drivers of aged 16 and older. Y-10+ ATVs are meant to be used by children aged 10 and older. All children must have the right physical and psychological capabilities to use a youth ATV responsibly and be under an adult's supervision at all times. Do not ride on public trails with youth ATVs, unless permitted by local law. Carefully read the vehicle's operator's guide. Follow all instructional and safety material and observe applicable laws and regulations. ATVs and SSVs are primarily designed for use on unpaved surfaces (off-road); avoid paved surfaces. For your safety, the operator and passenger(s) must wear a helmet, eye protection and applicable protective clothing. Always remember that riding, alcohol and drugs don't mix. Never engage in stunt driving. Avoid excessive speed and be particularly careful on difficult terrain. Always ride responsibly and safely. See your authorised BRP dealer for details and visit <https://can-am.brp.com>.





# CAN-AM X FASTHOUSE

**Desert racing runs deep in Fasthouse's roots. Our passion is forged by the camaraderie, good times, and heritage of the trailblazers who came before us.**

Fasthouse is built upon the legacy of those that came before it, while forging its own path of being the Purveyors of Good Times®. This collection merges Fasthouse's aesthetic with Can-Am Off-Road's prowess, a partnership that sets a new benchmark for off-road lifestyle, capturing the core of their shared values and leaving behind a legacy for all to revel in.



# CAM-AM x FASTHOUSE

MEN'S

## NEW Can-Am x FH Blaze Tee

288073 • S, M, L, XL, 2XL, 3XL

White (01), Black (90)



- Ultrasoft Poly-Cotton tee.
- 50% Cotton, 50% Polyester.
  - Soft and lightweight material.
  - Crew collar.
  - Screen-printed graphics.

## NEW Can-Am x FH Coilover Tee

288065 • S, M, L, XL, 2XL, 3XL

Black (90), Bronze (92)



- Ultrasoft 100% combed ring-spun Cotton tee.
- 100% combed ring-spun Cotton.
  - Soft and lightweight material.
  - Crew collar.
  - Plastisol ink screen printed graphics.

## NEW Can-Am x FH Duster Hooded Zip-Up

288077 • S, M, L, XL, 2XL, 3XL

Black (90)



- Traditional midweight zip-hoodie.
- 80% Cotton, 20% Polyester.
  - Ultrasoft midweight material (8 oz).
  - Fabric dye with screen printed graphics.
  - Zip-up fit with unlined hood.
  - Metal eyelets and hood drawstring.
  - Ribbed cuffs and waistband hem.

## NEW Can-Am x FH Duster Long-Sleeve Tee

288074 • S, M, L, XL, 2XL, 3XL

White (01), Black (90)



- Ultrasoft Poly-Cotton long-sleeve tee.
- 50% Cotton, 50% Polyester.
  - Soft and comfortable material.
  - Crew collar.
  - Screen-printed graphics.

## NEW Can-Am x FH Jersey

288075 • S, M, L, XL, 2XL, 3XL

Black (90), Silver (08)



- High-performance jersey utilizing breathable materials with a traditional cut.
- 100% Polyester.
  - High-quality silk screened graphics.
  - Moisture-wicking materials help keep you dry.
  - Mesh vent paneling on sides and under sleeves for airflow.
  - Drop tail on back panel to keep jersey tucked in and secure.
  - Athletic fit, moderately slim throughout body and sleeves.
  - Overlocked stitching for superior durability and longevity.

**NEW Can-Am x FH Motorall**

441716 • 28, 30, 32, 34, 36, 38, 40, 42

Bronze (92), Black (90)



- The Motorall® is our tried and true Grindhouse moto pant in an overall cut.
- 69% Polyester, 27% Nylon, 4% Spandex.
  - Zippered cargo pockets on front chest and both thighs.
  - Zippered mesh ventilation pockets on both thighs.
  - Zippered fly for easy pit stops.
  - Adjustable elastic comfort straps for step-in entry.
  - 600 denier poly and 4-way stretch mainbody fabric.
  - Upper chest molle straps for radios, tools and accessories.
  - High-strength Nylon thread double- and triple-stitched seams.
  - Silky soft tricot ¾ length knee brace optimized lining.
  - Patterned and fit for every style of rider.

**NEW Can-Am x FH Hoodie**

288084 • S, M, L

Black (90)



- Midweight hooded pullover.
- 80% Cotton, 20% Polyester.
  - Soft midweight material (8 oz).
  - Two front welt pockets.
  - Metal eyelets and hood drawstring.
  - Pullover fit with lined hood.
  - Screen-printed graphics.
  - Ribbed sleeve cuffs and waistband hem.

**NEW Can-Am x FH Jersey**

288081 • XS, S, M, L, XL, 2XL

Black (90), Silver (08)



- High-performance jersey utilizing breathable materials with a traditional cut.
- 100% Polyester.
  - High-quality silk screened graphics.
  - Moisture-wicking materials help keep you dry.
  - Mesh vent paneling on sides and under sleeves for airflow.
  - Drop tail on back panel to keep jersey tucked in and secure.
  - Athletic fit, moderately slim throughout body and sleeves.
  - Overlocked stitching for superior durability and longevity.

**NEW Can-Am x FH Long-Sleeve Tee**

288083 • S, M, L

Black (90), White (01)



- Ultrasoft Poly-Cotton long-sleeve tee.
- 50% Cotton, 50% Polyester.
  - Soft and lightweight material.
  - Crew collar.
  - Screen-printed graphics.

**NEW Can-Am x FH Tee**

288082 • XS, S, M, L, XL, 2XL

White (01), Black (90)



- Ultrasoft Poly-Cotton tee.
- 50% Cotton, 50% Polyester.
  - Soft and lightweight material.
  - Crew collar.
  - Screen-printed graphics.

**NEW Can-Am x FH Blaze Hat****288078** · One size

Silver (08)



Deep-profile structured 5-panel snapback constructed using premium Acrylic Wool.

- 80% Acrylic, 20% Wool.
- 5-panel construction.
- Deep-profile, structured.
- Woven front patch.
- Branded taping and flag label.
- Matching underbrim.
- Contrast snapback.

**NEW Can-Am x FH Speed Gloves****446384** · XS, S, M, L, XL, 2XL

Black (90)



The Speed-style gloves utilize quality materials with a traditional moto fit.

- 77% Polyamide, 15% Polyurethane, 7% Elastane, 1% Polychloroprene.
- Durable form fitting 2-way stretch material.
- Perforated Clarino® palm and thumb guards.
- Touchscreen fingertips on index and thumb.
- Gusseted knuckles for increased dexterity.
- Molded Neoprene low-pro cuff.
- Mesh-finger gussets and silicone grippers.
- TPR and printed embellishments throughout.

CAN-AM x FH JERSEY  
288081\_90

FASTHOUSE



# NEW PYRA FADE



Designed in-house by BRP for optimal performance.

4 New Fade Graphic colorways for more than 10 different Pyra colors in total.

-  LIGHTWEIGHT
-  ACCESSIBLE
-  DOT / ECE



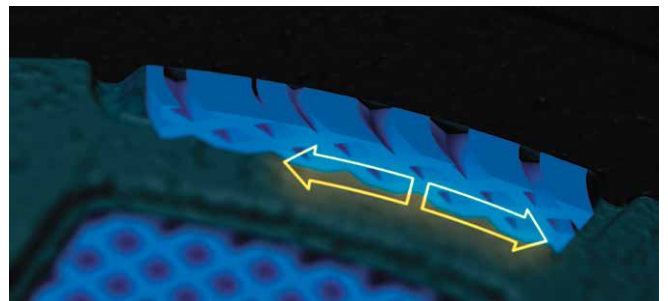
## AIRFLOW

Don't sweat the ride with an open chin, removable wind deflector and rear vents.



## LIGHTWEIGHT

Our lightest helmet at 1,310 g (size Large).



## PROTECTION

Energy Reduction Technology (ERT) redirects force away from the head in the event of a fall.

# HELMETS

UNISEX

## NEW Can-Am Pyra Fade Helmet

DOT ECE2206

929078 • XS, S, M, L, XL, 2XL, 3XL

Beige (02), Grey (09),  
Turquoise (Aqua) (76), White (01)



- 4-year limited warranty.
- Advanced plastic-composite shell with Energy Reduction Technology (ERT).
- Fully adjustable peak system.
- Front and rear hi-max air vent system to maximize cooling.
- Removable, washable and replaceable moisture-wicking liner.
- Lightweight double-D chin strap.
- Weight: ±1,310 grams for size Large.
- DOT / ECE 2206 certified.

## Can-Am Pyra Helmet

DOT ECE2206

929038 • XS, S, M, L, XL, 2XL, 3XL

Charcoal Grey (07), Red (30),  
Blue (80)



- 4-year limited warranty.
- Advanced plastic-composite shell with Energy Reduction Technology (ERT).
- Fully adjustable peak system.
- Front and rear hi-max air vent system to maximize cooling.
- Removable, washable and replaceable moisture-wicking liner.
- Lightweight double-D chin strap.
- Weight: ±1,310 grams for size Large.
- DOT / ECE 2206 certified.

## Can-Am Pyra Dune Helmet

DOT ECE2206

929039 • XS, S, M, L, XL, 2XL, 3XL

Sand (03), Charcoal Grey (07),  
Grey (09), Red (30)



- 4-year limited warranty.
- Advanced plastic-composite shell with Energy Reduction Technology (ERT).
- Fully adjustable peak system.
- Front and rear hi-max air vent system to maximize cooling.
- Removable, washable and replaceable moisture-wicking liner.
- Lightweight double-D chin strap.
- Weight: ±1,310 grams for size Large.
- DOT / ECE 2206 certified.

## Can-Am Exome Helmet

DOT ECE2206

929040 • XS, S, M, L, XL, 2XL, 3XL

White (01), Sand (03), Charcoal  
Grey (07)



- Perfect for adventure riding, on or off the trails.
- Modular helmet with advanced plastic-composite shell.
- Pinlock-ready multi-position and anti-scratch visor.
- Interchangeable retractable sun visor.
- Removable aerodynamic peak.
- Ultra-comfort and washable linings.
- Adjustable air vents and exhausts.
- DOT / ECE 2206 certified.





# NEW FLINT FADE GOGGLES

The Can-Am Flint goggle feature an injected PC lens that is anti-scratch and anti-fog and has distortion-free optics.

- ✓ UV protection
- ✓ Anti-fog
- ✓ Anti-scratch
- ✓ Frameless
- ✓ Second lens included
- ✓ Designed to fit with the Pyra helmet



- 1) CAN-AM FLINT FADE GOGGLES - CHROME  
448778\_99
- 2) CAN-AM FLINT FADE GOGGLES - RED  
448778\_30
- 3) CAN-AM FLINT FADE GOGGLES - YELLOW  
448778\_10

# GOGGLES

UNISEX

## NEW Can-Am Flint Photochromic Goggles

448779 • One size

Charcoal Grey (07)



- Thermo-formed 3-layer face foam offers best fitting.
- No-slip silicone strap keeps goggles in place.
- Injection-molded PC cylindrical lens provides distortion-free vision and enhanced impact resistance.

- Lens VLT from 80% to 28% with anti-scratch and anti-fog performance and with mirrored coating.
- Removable nose guard for extra deflection against debris.

## NEW Can-Am Flint Fade Goggles

448778 • One size

Chrome (99), Red (30),  
Turquoise (Aqua) (76), Yellow (10)



- Thermo-formed 3-layer face foam offers best fitting.
- No-slip silicone strap keeps goggles in place.
- Injection-molded PC cylindrical lens provides distortion-free vision and enhanced impact resistance.

- Tinted lens with anti-scratch and anti-fog performance with mirrored coating.
- Extra-clear lens included for low light condition.
- Removable nose guard for extra deflection against debris.

## Can-Am Flint Dune Goggles

448726 • One size

Sand (03), Charcoal Grey (07),  
Grey (09), Red (30)



- Thermo-formed 3-layer face foam offers best fitting.
- No-slip silicone strap keeps goggles in place.
- Injection-molded PC cylindrical lens provides distortion-free vision and enhanced impact resistance.

- Tinted lens with anti-scratch and anti-fog performance with mirrored coating.
- Extra-clear lens included for low light conditions.
- Removable nose guard for extra deflection against debris.

## NEW Can-Am Trench OTG Goggles

448792 • One size

Matte Black (93)



- Thermo-formed 3-layer face foam offers best fitting.
- No-slip silicone strap keeps goggles in place.
- Injection-molded PC cylindrical lens provides distortion-free vision and enhanced impact resistance.

- Single lens with anti-scratch and anti-fog performance.
- Removable nose guard for extra deflection against debris.
- Fits over most of the prescription glasses on the market with lens height below 2 in. (51 mm) and with arm width of 5¾ in. (146 mm).

## Can-Am Trench Goggles

448696 • One size

White (01), Charcoal Grey (07),  
Red (30), Blue (80)



- Thermo-formed 3-layer face foam offers best fitting.
- No-slip silicone strap keeps goggles in place.
- Injection-molded PC cylindrical lens provides distortion-free vision and enhanced impact resistance.

- Single lens with anti-scratch and anti-fog performance.
- Removable nose guard for extra deflection against debris.

# CUT THE COLD

Work doesn't stop on a cold day. Built tough for harsh conditions and available in both clim8® heated and regular non-heated versions. Combine our Expedition jacket, pants and gloves to stay warm and comfortable all winter long.

- 1) UNISEX REVERSIBLE BEANIE  
- WHISKEY  
454778\_28
- 2) CAN-AM EXOME HELMET  
- WHITE  
929040\_01
- 3) EXPEDITION RADIANT JACKET  
- BLACK  
440982\_90
- 4) EXPEDITION RADIANT GLOVES  
- BLACK  
446346\_90



## INTELLIGENT HEAT

The clim8 autonomous heating system uses sensors to track your body temperature and adjusts to your heat level.

## SMART APP CONTROL

Set your ideal temperature on the clim8® app and let it do the rest.

## BACKED BY DATA

Body heat mapping by the clim8 lab allows optimal thermal comfort.

# EXPEDITION COLLECTION

UNISEX

MEN'S

## NEW Expedition Radiant Jacket (Kit)

440982 • S, M, L, XL, 2XL, 3XL

Black (90)



- Warm utility jacket.
- Use to work around your vehicle.
  - 200 g of insulation.
  - Fabric performance 10,000 mm / 5,000 g.
  - Water-resistant Teflon coating.
  - Underarm vents.
  - 8 multipurpose pockets.
  - Detachable hood.
  - Wide reflective webbing for maximum visibility.

- Practical carabiner.
- Powder skirt.
- Reinforced elbows and forearms.
- Adjustable collar and wrists.
- Critical seam sealed.
- E LinQ system.
- clim8® heated technology.
- Includes 1 battery and a charger.
- YKK zippers.

### Performance:

Waterproofness

Breathability

Warmth

### Key benefits:

- Temperature regulation.
- Cuts wind.
- Reinforced.

## Expedition Jacket

440964 • S, M, L, XL, 2XL, 3XL

Army Green (77), Black (90), Khaki (05)



- Warm utility jacket.
- Use to work around your vehicle.
  - 200 g of EcoLoft insulation.
  - Fabric performance 10,000 mm / 5,000 g.
  - Water-resistant Teflon coating.
  - Underarm vents.
  - 8 multipurpose pockets.
  - Detachable hood.

- Wide reflective webbing for maximum visibility.
- Practical carabiner.
- Powder skirt.
- Reinforced elbows and forearms.
- Adjustable collar and wrists.
- Critical seam sealed.
- E LinQ system.
- YKK zippers.

### Performance:

Waterproofness

Breathability

Warmth

### Key benefits:

- Cuts wind.
- Reinforced.
- Reflective.

## Expedition Radiant Gloves

446346 • XS, S, M, L, XL, 2XL, 3XL

Black (90)



- Extra warm gloves for comfort in all riding conditions.
- Top-hand: 200 g PrimaLoft® Gold Palm: 133 g PrimaLoft® Gold.
  - Waterproof, windproof and breathable glove insert.
  - Moisture-wicking fleece lining.
  - Includes 2 batteries and a charger.

- Leather palm and fingers with grip reinforcement.
- Touchscreen index finger.
- Nose wipe on thumb.
- clim8® heated technology.

### Performance:

Waterproofness

Dexterity

Warmth

## Battery (1-PCE) for Heated Gear

488100 • One size

Black (w90)



- 1x lithium ion battery, 7,4 V, 3,000 mA.
- Rechargeable.

## Battery Charger for Heated Gear

488101 • One size

Black (90)



- Battery charger with dual output.
- EU/US interchangeable plugs.

**Expedition Highpants**

**286814** • S, M, L, XL, 2XL, 3XL

Army Green (77), Black (90), Khaki (05)\*



- Warm utility highpants.
- Use to work around your vehicle.
  - 200 g of EcoLoft insulation.
  - Fabric performance 10,000 mm / 5,000 g.
  - Water-resistant Teflon coating.
  - Wide reflective webbing for maximum visibility. Reinforced seat and inner legs.

- Fleece-lined seat.
- Storm gaiters.
- 2 wide cargo pockets and 1 chest pocket.
- Suspenders with loop adjustment.
- Pre-shaped padded knees.
- Velcro closure at fly.

**Performance:**



**Key benefits:**

- Cuts wind.
- Reinforced.
- Reflective.

\*Limited quantity for khaki color.

**Expedition Gloves**

**446337** • XS, S, M, L, XL, 2XL, 3XL

Army Green (77), Black (90), Khaki (05)



- Extra warm gloves for comfort in all riding conditions.
- Top-hand: 200 g PrimaLoft® Gold Palm: 133 g PrimaLoft® Gold.
  - Waterproof, windproof and breathable glove insert.
  - Naturally moisture-wicking and antimicrobial wool-blend lining.

- Leather palm and fingers with grip reinforcement.
- Touchscreen index finger.
- Nose wipe on thumb.

**Performance:**



# MUD GEAR

**Mud Jacket**

**286676** • S, M, L, XL, 2XL

Clear (00), Matte Black (93)

**286797** • S, M, L, XL, 2XL

Camo (37)



- Mud jacket 100% waterproof PVC.
- 98.5% Polyvinyl Chloride (PVC), 1.5% Mesh Polyester.
  - Electronically welded seams.
  - Underarm and rear vent panels.
  - Two hand pockets.
  - Elastic cuffs, hem and collar.
  - Can-Am logo upper left front.

**Mud Pants**

**286128** • S, M, L, XL, 2XL

Clear (00), Matte Black (93)

**286796** • S, M, L, XL, 2XL

Camo (37)



- Oversized pants made of 100% waterproof PVC.
- 100% Polyvinyl Chloride (PVC).
  - Elastic waistband and ankle cuff.
  - Electronically welded seams.
  - Strategically placed ventilation.
  - Side openings at bottom leg.

# NECKWEAR

UNISEX

## Pyra Balaclava

448735 · One size

Black (90)



- Balaclava with a Neoprene face guard for effective moisture exchange to promote breathing in extreme cold.
- Perfect when used with PYRA helmet.
- Use on trails.
- 65% Nylon, 20% Polyester, 10% Spandex, 5% Synthetic.
- Stretchy, quick-dry fabric with brushed inner surface.

- Mouth guard deflects moisture down and away from goggles.
- Windbreaker fabric around forehead, eyes and neck.
- Flatlocked seams prevent skin chafing.
- Perfect to use with open-face helmets.
- Centered heat transfer PYRA logo.

## Ultimate Trail Balaclava

447736 · S/M, L/XL

Black (90)



- Perfect when used with the OXYGEN, BV2S or Modular 3 helmets.
- 60% Polyester, 30% Nylon, 10% Spandex.
- Keeps you warm while providing breathable and windproof performance.
- Waterproof, windproof and breathable fabric at neck.
- Moisture-wicking fabric.
- Elastic channel at sides for contoured fit.

## Can-Am Tube

454779 · One size

Black with Graphics (94), Camo (37), Khaki (05), Orange (12)



- Multipurpose, stretchy and comfortable tubular headwear.
- 88% Polyester, 12% Spandex.
- 12 different configurations: bandana, headband, balaclava and more.
- 50 cm length / 25 cm width.
- Small Can-Am logo on the upper-left edge of the tube.

## Neck Gaiter

447841 · One size

Black (90)



- Perfect for overall wind protection.
- 100% Polyester.
- Spandex binding and elastic at back for a better fit.
- Anti-pilling fleece.

# JERSEY

MEN'S

## Can-Am Premium Jersey

454769 • S, M, L, XL, 2XL, 3XL

Black (90), Charcoal Grey (07), Navy (89)



Lightweight Premium Jersey.

- 100% Polyester.
- Quick-dry, moisture-wicking fabric for maximum comfort.
- Antimicrobial fabric.
- Mesh fabric for extra ventilation at underarms.
- Silicone print at drop tail keeps jersey tucked in pants.
- Sublimated print.

## Can-Am Windproof Jersey

454768 • S, M, L, XL, 2XL, 3XL

Black (90), Camo (37), Navy (89)



Men's Can-Am Windproof Jersey.

- The perfect choice for those cooler/windy riding days.
- Main fabric is moisture-wicking, lightweight and quick-dry.
- Wind protection at front panel with heavier density material (+25 gsm).
- Mesh fabric for extra ventilation at underarms.
- Drop tail provides added coverage.
- Silicone print on drop tail keeps jersey tucked in pants.
- Sublimated print.

## Can-Am Emblem Jersey

454765 • S, M, L, XL, 2XL, 3XL

Army Green (77), Camo (37), Charcoal Grey (07), Green (70), Indigo Blue (82), Red (30)



Classic Can-Am Jersey.

- 100% Polyester.
- Quick-dry, moisture-wicking fabric for maximum comfort.
- Mesh fabric for extra ventilation at underarms.
- Sublimated print.

LADIES'

## Can-Am Premium Jersey

454770 • XS, S, M, L, XL, 2XL

Black (90), White (01)



Lightweight Premium Jersey.

- Quick-dry, moisture-wicking fabric for maximum comfort.
- Antimicrobial fabric.
- Mesh fabric for extra ventilation at underarms.
- Silicone print at drop tail keeps jersey tucked in pants.
- Sublimated print.

## Can-Am Emblem Jersey

454766 • XS, S, M, L, XL, 2XL

Black (90), Camo (37), Grey (09)



Women's Classic Can-Am Jersey.

- 100% Polyester.
- Quick-dry, moisture-wicking fabric for maximum comfort.
- Mesh fabric for extra ventilation at underarms.
- Sublimated print.

# PERFORMANCE COLLECTION

MEV'S

## NEW Performance Softshell Jacket

286828 • S, M, L, XL, 2XL

Army Green (77), Black (90)



- Removable-sleeve jacket with a large storage pocket on the back.
- 90% Polyester, 10% Spandex.
  - Chest vent zip with mesh interior.
  - Large side pocket with zip.
  - Small Can-Am logo on the left chest / large Can-Am logo upper center back / Can-Am logo on left forearm.
  - Cuff tab for adjustment.
  - Zip garage upper center front.

## Can-Am Performance Fleece Hoodie

454627 • S, M, L, XL, 2XL, 3XL

Black with graphics (94), Heather Charcoal (29)



- Comfortable and relaxed Performance Fleece Hoodie.
- 96% Polyester, 4% Spandex.
  - Antimicrobial.
  - Brushed fleece inside for more softness.
  - Adjustable hood with drawcord.
  - Rib 1x1 at hem and cuffs.
  - Kangaroo front pocket with 2 coated zippers with auto-lock.
  - Embossed Can-Am logo center front.

## NEW Performance LS Tee

454764 • S, M, L, XL, 2XL

Black (90), Silver (08)



- Lightweight Performance long-sleeve T-shirt.
- 100% Cotton.
  - Small Can-Am Desert Kings logo on the upper left front / large one with a desert graphic in a triangle on the upper center back.

## NEW Performance T-shirt

454763 • S, M, L, XL, 2XL

Black (90), Silver (08)



- Lightweight Performance short-sleeve T-shirt.
- 100% Polyester.
  - Small Can-Am Desert Kings logo on the upper left front / large one with a desert graphic in a triangle on the upper center back.



**NEW Can-Am Racing Pants****454771** • 30, 32, 34, 36, 38, 40

Black (90), Indigo Blue (82), Orange (12)



- Can-Am Racing Pants with knee pads.
- Lightweight and extremely breathable pants for riders seeking peak performance, toughness and a competitive edge.
  - Overall water-repelling Teflon<sup>®</sup> treatment.
  - Debossed full-grain leather inner knee for heat and abrasion resistance.
  - Non-fading sublimated graphics.
  - Stretch panel at crotch, knee, side waist, upper back and lower back leg for ease of movement.

- Rubberized elastic waist to hold jersey in place.
- Ratchet-style waist closure for better adjustment.
- Pre-curved pants for a race posture.
- Straight hem at leg opening for more comfort inside boots.
- ¾ length mesh lining.
- Large Can-Am logo from hips to mid-thigh, left and right / small Can-Am logo upper center back.

**Can-Am Performance Jogger****454630** • S, M, L, XL, 2XL, 3XL

Heather Charcoal (29), Camo (37), Army Green (77) and Black (90)



- Comfortable and relaxed Performance Jogger.
- 61% Cotton, 39% Polyester.
  - Gusset.
  - Antimicrobial.
  - High-density print.
  - Brushed fleece inside for more softness.

- Drawcord adjustment at waist.
- Rib 1x1 at ankles.
- 2 zip hand pockets + 1 zip back pocket (coated zippers with auto-lock).
- Small woven patch logo next to left pocket end.

**GLOVES****NEW Can-Am Performance Gloves****446359** • S, M, L, XL, 2XL

Black (90), Navy (89), Sand (03)



- Can-Am Performance Gloves offering ventilation, comfort and maximal protection.
- 80% Polyester, 20% Elastane.
  - Top-hand material has 4-way stretch.
  - Debossed Airprene<sup>®</sup> cuff with Velcro closure.
  - Articulated fingers for easier movements.
  - Laser-cut vent holes for optimal ventilation.

- Internal integrated co-polymer knuckle pad for maximal protection.
- Clarino<sup>®</sup> nash layers on the palm for durability and comfort.
- Touchscreen at index and thumb.
- Can-Am logo on top of the glove.


**Can-Am Steer Gloves****446357** • XS, S, M, L, XL, 2XL, 3XL

Army Green (77), Black (90), Brick Red (33), Green (70), Navy (89)



- The Can-Am Steer Glove is designed to be durable while offering a high level of ventilation and comfort in the hottest environment.
- 80% Polyester, 20% Elastane.
  - Molded Neoprene for fitted cuffs.
  - Articulated fingers for easier movements.
  - Injected TPR on knuckles for protection.

- Clarino<sup>®</sup> nash layers on the palm for durability and comfort.
- Touchscreen at index and thumb.
- Ventilated air mesh fabric.
- Clear silicone gripper print on fingers (except thumb).
- Can-Am logo on top of the glove.

A man with a beard and a grey cap is leaning on a metal railing. He is wearing a tan utility overshirt over a dark t-shirt and dark pants. He is looking off to the side with a serious expression. The background is a blurred field with some yellow flowers in the foreground.

CAN-AM UTILITY OVERSHIRT  
454788

# OFF THE LAND COLLECTION

# UTILITY COLLECTION

MEN'S

## Can-Am Utility Jacket

454784 • S, M, L, XL, 2XL, 3XL

Army Green (77), Black (90)



Heavy-duty Jacket with warm and comfortable lining for colder weather.

- Heavyweight: 300 gsm.
- Water-repellent and wind-resistant.
- Body and hood are lined with sherpa.
- Nylon lining in sleeves.
- Hood adjustment with drawcord.
- 1 zip chest pocket; 2 lower front pockets; 2 inside pockets for additional storage.

- Internal rib-knit storm cuffs.
- Drop tail.
- Waist adjustment.
- DWR (water-repellent finish).

## Can-Am Utility Overshirt

454785 • S, M, L, XL, 2XL, 3XL

Black (90), Khaki (05)



Can-Am Utility Overshirt with 2 chest flap pockets and 2 hand pockets at waist.

- 90% Acrylic, 10% Sheep's Wool.
- Heavy shirt: 300 gsm.
- Body lining with Micro-sherpa 185 gsm.
- Stretchable.
- DWR finish (durable water-repellent).

- Garment wash.
- Can-Am-branded snaps at center front, pockets.
- Hanger loop on back yoke.

## Can-Am Coaches' Jacket

454785 • S, M, L, XL, 2XL, 3XL

Black (90), Camo (37)



Lightweight, weather-resistant Can-Am Coaches' Jacket.

- 95% Nylon, 5% Elastane.
- Performance 8K / 800.
- Windproof.
- Water-repellent finish.
- Front matte-finish snaps.
- Interior and sleeves finished with lining.

- 2 hand pockets.
- Elastic cuff.
- Can-Am logo upper left front.
- Bungee adjuster at the hem, located on the lateral.

## Can-Am Waffle Knit

454791 • S, M, L, XL, 2XL, 3XL

Black (90), Camo (37)



Waffle knit long-sleeve tee.

- 60% Cotton, 40% Polyester.
- Textured fabric knit on cuffs.
- Can-Am Rotax XPS Fox logo upper center front / yellow blood Can-Am Since 1973 circle shaped with mountains logo on forearm cubit side.

**Can-Am Pit Shirt**

454790 · S, M, L, XL, 2XL, 3XL

Black (90), Camo (37)



Stretchy, durable and anti-wrinkle short-sleeve button up shirt to wear when you need to get the job done comfortably.

- 60% Cotton, 40% Polyester.
- Zipped pocket at front (wearer's left side).
- Hidden-button placket.

**WOODSMAN COLLECTION****Can-Am Puffer Jacket**

454783 · S, M, L, XL, 2XL, 3XL

Army Green (77), Camo (37), Indigo Blue (82)



Puffer Jacket with down-like insulation.

- 100% Stretchable Polyester.
- Alternative down-fill-like insulation.
- Welded pattern design.
- 1 hand pocket next to the centered zip upper left + 2 inner pockets for extra storage.
- Lateral hidden pocket with zip.

- Waist adjustment, hood adjustment.
- Reflective detail.
- DWR (water-repellent finish).
- Elastic cuff.

**NEW Hybrid Pullover Hoodie**

454782 · S, M, L, XL, 2XL

Army Green (77), Black (90)



Hybrid Pullover Hoodie with durable material.

- 80% Cotton, 20% Polyester.
- Quilted Nylon Ripstop material at arm, upper body and hood.
- Rib 1x1 at cuffs and bottom hem.
- 2 hand pockets.
- 3-piece hood with drawcord.

**Division T-shirt**

454756 · XS, S, M, L, XL, 2XL, 3XL

Army Green (77), Black (90), Ivory (97)



Can-Am Division T-shirt.

- 50% Polyester, 50% Cotton.
- Small graphic Can-Am Off-Road Division logo on the upper left front / large one on the center back.

MEN'S

**Off-Road Livin' T-shirt**

**454761** • XS, S, M, L, XL, 2XL, 3XL

Black (90), Denim Blue (79)



- Can-Am Off-Road Livin' T-shirt.
- 50% Polyester, 50% Cotton.
  - Large Can-Am logo on the upper center front with colored mountain graphic above / small Can-Am Off-Road Livin' logo under back collar.

**Driven to Win T-shirt**

**454757** • XS, S, M, L, XL, 2XL, 3XL

Black (90), Ivory (97), Navy (89), Wine (32)



- Can-Am Driven to Win T-shirt.
- 50% Polyester, 50% Cotton.
  - Small graphic Can-Am Driven to Win Off-Road logo on the upper left front / large one in the upper center back.

**Off-Road T-shirt**

**454759** • XS, S, M, L, XL, 2XL, 3XL

Army Green (77), Black (90), Navy (89), Wine (32)



- Casual T-shirt for everyday wear.
- 50% Polyester, 50% Cotton.
  - Small graphic Can-Am Off-Road diamond-shaped logo on the upper left front / large one on the upper center back.

LADIES'

**Off-Road Livin' T-shirt**

**454755** • XS, S, M, L, XL, 2XL

Black (90), Heather Grey (27), Navy (89)



- Casual T-shirt for everyday wear.
- 50% Polyester, 50% Cotton.
  - Large Can-Am logo on the chest with colored mountain graphic above.

**Driven to Win T-shirt**

**454758** • XS, S, M, L, XL, 2XL

Navy (89), Whiskey (28)



- Casual T-shirt with Can-Am graphic.
- 50% Polyester, 50% Cotton.
  - Large graphic Can-Am Driven to Win Off-Road logo on the upper center front / small one under the collar in the center back.

# NEW PREMIUM FITS

The new Can-Am collection has new premium styles for riders of all ages. Rep your favorite brand on and off your ride.



1



2



5



3



4



6

1) CAN-AM 5 PANEL CAP  
- KHAKI  
454851\_05

2) CAN-AM SIGNATURE T-SHIRT  
- HEATHER GREY  
454754\_29

3) CAN-AM PREMIUM HOODIE  
- HEATHER CHARCOAL  
454780\_29

4) CAN-AM SIGNATURE  
CREWNECK SWEATSHIRT  
- BURGUNDY  
454877\_35

5) CAN-AM SIGNATURE CAP  
- BURGUNDY  
454524\_35

6) CAN-AM SIGNATURE T-SHIRT  
- ARMY GREEN  
454753\_77

# PREMIUM COLLECTION

MEN'S

## Can-Am Premium Hoodie

454780 • S, M, L, XL, 2XL, 3XL

Black (90), Heather Charcoal (29)



Can-Am Premium full-zip hoodie with heavyweight fleece.

- 72% Cotton, 23% Polyester Fleece, 5% Spandex.
- Fleece: 320 gms.
- Knit ribbing at cuff and bottom hem.
- Drawcord adjustment at hood.
- Double-lined hood: 100% Cotton.

- Kangaroo front pocket.
- Small ESTD 1973 Can-Am Off-Road in a hexagon and rectangular-shaped logo on the upper left front/ same logo but larger on upper center back.

## Can-Am Premium Pullover Hoodie

454781 • S, M, L, XL, 2XL, 3XL

Green (70), Orange (12)



Can-Am Premium Pullover Hoodie with heavyweight fleece.

- 72% Cotton, 23% Polyester Fleece, 5% Spandex.
- Fleece: 320 gsm.
- Knit ribbing at cuffs and bottom hem.
- Kangaroo pocket.

- Drawcord adjustment at hood.
- Double-lined hood: 100% Cotton.
- Large Can-Am Rotax XPS Fox logo upper center front.

# SIGNATURE COLLECTION

MEN'S

## Can-Am Signature Pullover Hoodie

454876 • S, M, L, XL, 2XL, 3XL

Black (90), Burgundy (35), Camo (37), Royal Blue (83)



Comfortable Signature Pullover Hoodie.

- 61% Cotton, 39% Polyester.
- Soft material with kangaroo pocket.
- Knit ribbing at cuffs and bottom hem.
- Drawcord adjustment at hood.
- Large Can-Am logo on the upper center front.

## Can-Am Signature Crewneck Sweatshirt

454877 • S, M, L, XL, 2XL, 3XL

Black (90), Burgundy (35), Camo (37), Royal Blue (83)



Comfortable Signature Crewneck Sweatshirt.

- 61% Cotton, 39% Polyester.
- Knit ribbing at cuffs and bottom hem.
- Large Can-Am logo on the upper center front.

## Can-Am Signature T-shirt

454754 • XS, S, M, L, XL, 2XL, 3XL

Army Green (77), Black (90), Heather Charcoal (29), Heather Grey (27), Navy (89), Wine (32)



Signature T-shirt.

- 50% Polyester, 50% Cotton.
- Large Can-Am logo on the chest.

**Signature Pullover Hoodie****454874** · XS, S, M, L, XL, 2XL

Black (90), Burgundy (35), Camo (37)



Comfortable Signature Pullover Hoodie.

- 80% Cotton, 20% Polyester.
- Soft material with kangaroo pocket.
- Knit ribbing at cuffs and bottom hem.
- Drawcord adjustment at hood.
- Large Can-Am logo on the upper center front.

**Signature Crewneck Sweatshirt****454875** · XS, S, M, L, XL, 2XLBlack (90), Burgundy (35),  
Heather Grey (27)

Comfortable Signature Crewneck Sweatshirt.

- 100% Cotton.
- Knit ribbing at cuffs and bottom hem.
- Large Can-Am logo on the upper center front.

**Can-Am Signature T-shirt****454753** · XS, S, M, L, XL, 2XLArmy Green (77), Black (90),  
Heather Grey (27), Navy (89)

Signature T-shirt.

- 50% Polyester, 50% Cotton.
- Large Can-Am logo on the chest.



# HEADWEAR

MEN'S

<p><b>Can-Am 5 Panel Cap</b></p> 	<p><b>454851</b> • One size</p>	<p>Camo (37), Khaki (05)</p> <p>Lightweight ripstop Can-Am 5-panel cap.</p> <ul style="list-style-type: none"> <li>• 85% Acrylic, 15% Wool.</li> <li>• Snapback closure at back.</li> <li>• Sewn welded Can-Am patch and flag label.</li> </ul>
<p><b>Can-Am Flex Fit ESTD Cap</b></p> 	<p><b>454773</b> • S/M, L/XL, 2XL</p>	<p>Black (90), Warm Grey (15)</p> <p>Fitted cap with regular curved peak.</p> <ul style="list-style-type: none"> <li>• 85% Acrylic, 15% Wool.</li> <li>• Can-Am embroidered hexagon-shaped patch centered at front.</li> <li>• Can-Am embroidery logo at back.</li> <li>• Interior Can-Am-branded tape.</li> </ul>
<p><b>Flat Cap Off-Road</b></p> 	<p><b>454772</b> • One size</p>	<p>Black (90), Camo (37), Denim Blue (79)</p> <p>Vision cap with flat peak.</p> <ul style="list-style-type: none"> <li>• 85% Acrylic, 15% Wool.</li> <li>• Snapback closure at back.</li> <li>• Interior Can-Am-branded tape.</li> <li>• Small embroidered patch Can-Am Off-Road diamond-shaped logo on the center of the cap.</li> </ul>
<p><b>Flat Mesh Cap Hit the Trails</b></p> 	<p><b>454775</b> • One size</p>	<p>Black (90), Khaki (05)</p> <p>Lightweight Can-Am mesh cap with flat peak.</p> <ul style="list-style-type: none"> <li>• 85% Acrylic, 15% Wool.</li> <li>• Side and back in mesh fabric.</li> <li>• Snapback closure at back.</li> <li>• Can-Am scenery arch-shaped print centered at front.</li> <li>• Interior Can-Am-branded tape.</li> </ul>
<p><b>Can-Am Signature Cap</b></p> 	<p><b>454524</b> • One size</p>	<p>Army Green (77), Black (90), Burgundy (35), Heather Charcoal (29), Indigo Blue (82), Teal (74)</p> <p>Cap with Signature Logo.</p> <ul style="list-style-type: none"> <li>• 85% Acrylic, 15% Wool.</li> <li>• Can-Am logo on the front.</li> <li>• Snapback closure at back.</li> </ul>

**NEW Can-Am Curved Cap****454777** · One size

Burgundy (35), Heather Charcoal (29)



- Classic Can-Am Curved Cap.
- 85% Acrylic, 15% Wool.
  - Snapback closure at back.
  - 3D puff Can-Am embroidery logo.
  - Interior Can-Am-branded tape.

**Reversible Beanie****454778** · One size

Army Green (77), Heather Charcoal (29), Navy (89), Whiskey (28)



- 2-in-1 reversible hat with custom knit-in logos.
- 95% Acrylic, 4% Nylon, 1% Spandex.
  - Hypoallergenic.
  - 12" length uncuffed.

# KID'S COLLECTION

**Can-Am Emblem Jersey****454767** · 3-4, 5-6, 7-8, 10-12, 14-16

Black (90), Camo (37), Indigo Blue (82)



- Semi-fitted V-neck junior jersey.
- 100% Polyester.
  - Quick-dry, moisture-wicking fabric for maximum comfort.
  - Mesh fabric for extra ventilation at underarms.
  - Sublimated print.

**Off-Road Livin' T-shirt****454760** · 3-4, 5-6, 7-8, 10-12, 14-16

Black (90), Brick Red (33)



- Short-sleeve junior T-shirt.
- 50% Polyester, 50% Cotton.
  - Large Can-Am logo on the upper center front with colored mountain graphic above / small Can-Am Off-Road Livin' logo under back collar.

**Curved Cap****454774** · One size

Camo (37)



- Youth curved cap with mesh panels.
- 85% Acrylic, 15% Wool.
  - Snapback closure at back.
  - 3D puff Can-Am embroidery logo.
  - Contrast color under peak.
  - Interior Can-Am-branded tape.

# COMMUNICATION SYSTEMS

UNISEX

## Sena<sup>†</sup> 50R H/K Bluetooth<sup>†</sup> Comm System



**448771** • Single pack / One size

**448772** • Dual pack / One size

Black (90)

Sena 50R Bluetooth Comm System with superior audio quality.

- Premium speakers and microphone with SOUND BY Harman Kardon<sup>®</sup>.
- Mesh 2.0: robust reliability.
- One-click-to-connect simplicity.
- Mesh Intercom™ features superior audio quality.
- Multi-channel protocol in Open Mesh allows users to switch between 9 comm channels.
- Bluetooth<sup>®</sup> 5 enabled.

- Sena's new benchmark for HD speakers.
- Convenience of voice-activated digital assistant access ("Hey Google" / "Hey Siri").
- 30% faster rapid charging.
- Wi-Fi adapter included, which charges and installs updates automatically.
- An elegant, glove-friendly three-button interface.
- Voice commands recognized across 8 languages.

## Sena 5S Bluetooth Comm System



**448755** • Single pack / One size

**448756** • Dual pack / One size

Black (90)

Sena 5S Bluetooth Comm System.

- Bluetooth 5.
- HD speakers.
- HD intercom.
- Intercom 700 m / 0.4 mi.
- Two-way intercom.

- Multi-language voice command.
- Audio Multitasking™.
- LCD display.
- Smartphone app.
- FM radio.

# BAG

UNISEX

## Can-Am Laptop Backpack



**469318** • One size

Charcoal Grey (07)

- Laptop/tablet pocket holds up to 15" laptop.
- Rain cover.
- Fleece-lined sunglass pocket.
- Adjustable shoulder and chest straps.
- Organization pocket with key clip.
- Foam padding on straps and back for comfort.

- Carry-on slider.
- Water bottle side pouch.
- 900 D Polyester.

## Can-Am 90 L Gear Bag



**469316** • One size

Charcoal Grey (07)

- Large main compartment with easy access to all gear.
- Large separated boot pocket.
- Zippered accessory pocket.
- Easy-grab handles for transport.
- Detachable shoulder strap.

- Heavy-duty reinforced base.
- 90 L capacity.
- 900 D Polyester.

## Can-Am Duffle Backpack



**469317** • One size

Charcoal Grey (07)

- Duffle bag with shoulder strap, can transform into a backpack.
- Adjustable shoulder and chest straps.
- Bottle holder.
- Foam padding on straps for comfort.
- 900 D Polyester.
- 50 L capacity.

# PLAY & LICENSING PRODUCTS

UNISEX

## Can-Am Park Quick-Dry Blanket by Slowtide†

**B107480009**



- Made from 100% recycled materials.
- Quick-dry microfiber fabric with DWR water-repellent coating on the backside.
- Oversized.
- Loops for tent stakes and corner pockets.
- Built-in stuff pouch.
- Zippered corner pocket.
- Sand-free.
- Sublimated print.
- Content: 80% Polyester, 20% Polyamide.
- Dimensions: 72" L x 58" W (183 cm L x 147 cm W).

## Can-Am Camo Camp Blanket by Slowtide

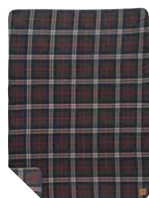
**B107500037**



- Made from 100% recycled materials.
- Oversized.
- Soft and plush polar fleece on one side.
- Zippered corner pocket.
- Sand-free.
- Soft-brushed finish with sublimated print.
- Top layer: 100% Polyester.
- Bottom layer: 100% Polyester with water-repellent DWR shell.
- Dimensions: 72" L x 58" W (183 cm L x 147 cm W).

## Can-Am Plaid Fleece Blanket by Slowtide

**B107490090**



- Made from 100% recycled materials.
- Lightweight.
- Oversized.
- Reversible design.
- Embroidered edge detailing.
- Soft-brushed finish with sublimated print.
- Content: 100% Polyester.
- Dimensions: 66" L x 50" W (167 cm L x 127 cm W).

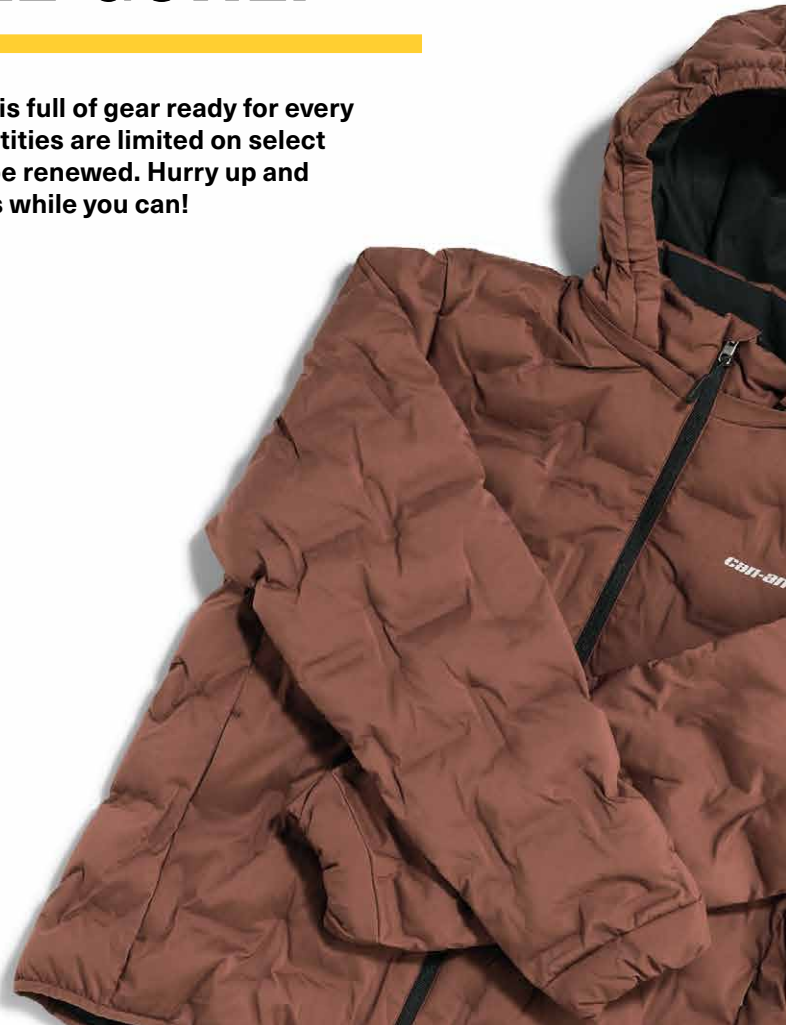


---

# ONCE THEY'RE GONE, THEY'RE GONE!

---

The Can-Am collection is full of gear ready for every wild adventure. Quantities are limited on select styles that will not be renewed. Hurry up and grab yours while you can!



# MEN'S CASUAL JACKETS

MEN'S

## Puffer Jacket

454543 • S, M, L, XL, 2XL, 3XL

Autumn Red (14), Camo (37), Black (90)



- Puffer Jacket with down-like insulation.
- 100% Stretchable Polyester.
  - Alternative down-fill-like insulation.
  - Welded pattern design.
  - Removable hood.
  - 2 hand pockets + 2 inner pockets for extra storage.
  - Waist adjustment.
  - Reflective detail.
  - DWR (water-repellent finish).

## Can-Am Utility Jacket

454525 • S, M, L, XL, 2XL, 3XL

Navy (89), Black (90)



- Heavy-duty Jacket with warm and comfortable lining for colder weather.
- Heavyweight: 300 gsm.
  - Water-repellent and wind-resistant.
  - Body and hood are lined with sherpa.
  - Nylon lining in sleeves.
  - Hood adjustment with drawcord.
  - 1 zip chest pocket; 2 lower front pockets; 2 inside pockets for additional storage.
  - Internal rib-knit storm cuffs.
  - Drop tail.
  - Waist adjustment.
  - DWR (water-repellent finish).

# HIGHPANTS

MEN'S

## Can-Am Utility Pants

454629 • S, M, L, XL, 2XL, 3XL

Camo (37), Black (90)



- Utility Pants with slim fit.
- 98% Cotton, 2% Spandex.
  - Gusset at crotch for movement ease and extra comfort.
  - Reinforcement at hand pockets.
  - Knife pocket (wearer's left side).
  - Zip pocket (wearer's right side).
  - 2 back pockets and 1 hidden card pocket.
- Garment wash.
  - DWR finish (durable water-repellent).
  - In-and-out drawcord adjustment at waist.
  - Anti-bacterial/anti-odor treatment.
  - Belt loop.

## Can-Am Utility Shorts

454636 • S, M, L, XL, 2XL, 3XL

Camo (37), Black (90)



- Utility Shorts with slim fit.
- 98% Cotton, 2% Spandex.
  - Gusset at crotch for movement ease and extra comfort.
  - Reinforcement at hand pockets.
  - Knife pocket (wearer's left side).
  - Zip pocket (wearer's right side).
  - 2 pack pockets + 1 hidden card pocket.
- Garment wash.
  - DWR finish (durable water-repellent).
  - Anti-bacterial/anti-odor treatment.
  - In-and-out drawcord adjustment at waist.
  - Belt loop.

# JERSEY

MEN'S	<b>Can-Am Emblem Jersey</b>	<b>454537</b> • S, M, L, XL, 2XL, 3XL	Red (30), Navy (89), Black (90)
		<ul style="list-style-type: none"> <li>• 100% Polyester.</li> <li>• Quick-dry, moisture-wicking fabric for maximum comfort.</li> <li>• Mesh fabric for extra ventilation at underarms.</li> <li>• Sublimated print.</li> </ul>	
MEN'S	<b>Ladies' Can-Am Tetra Jersey</b>	<b>454558</b> • XS, S, M, L, XL, 2XL	White (01), Black (90)
		<ul style="list-style-type: none"> <li>• Quick-dry, moisture-wicking fabric for maximum comfort.</li> <li>• Anti-microbial fabric.</li> <li>• Mesh fabric for extra ventilation at underarms.</li> <li>• Silicone print at drop tail keeps jersey tucked in pants.</li> <li>• Sublimated print.</li> </ul>	
LADIES'	<b>Ladies' Can-Am Emblem Jersey</b>	<b>454539</b> • S, M, L, XL, 2XL	White (01), Black (90)
		<ul style="list-style-type: none"> <li>• 100% Polyester.</li> <li>• Quick-dry, moisture-wicking fabric for maximum comfort.</li> <li>• Mesh fabric for extra ventilation at underarms.</li> <li>• Sublimated print.</li> </ul>	
KIDS/TEEN	<b>Youth Can-Am Emblem Jersey</b>	<b>454540</b> • 3-4, 5-6, 7-8, 10-12, 14-16	Navy (89), Black (90)
		<ul style="list-style-type: none"> <li>• 100% Polyester.</li> <li>• Quick-dry, moisture-wicking fabric for maximum comfort.</li> <li>• Mesh fabric for extra ventilation at underarms.</li> <li>• Sublimated print.</li> </ul>	


# MEN'S SWEATSHIRTS

MEN'S	<b>Can-Am Premium Zipped Hoodie</b>	<b>454544</b> • S, M, L, XL, 2XL, 3XL	Heather Grey (27), Camo (37)
		<p>Can-Am Premium full-zip hoodie with heavyweight fleece.</p> <ul style="list-style-type: none"> <li>• 72% Cotton, 23% Polyester Fleece, 5% Spandex.</li> <li>• Fleece: 320 gsm.</li> <li>• Knit ribbing at cuff and bottom hem.</li> <li>• Drawcord adjustment at hood.</li> <li>• Double-lined hood: 100% Cotton.</li> </ul>	

# T-SHIRT

MEN'S	<b>Can-Am Pit Shirt</b>	<b>454546</b> • S, M, L, XL, 2XL, 3XL	Charcoal Grey (07), Black (90)
	 <p>Stretchy, durable and anti-wrinkle short-sleeve button-up shirt to wear when you need to get the job done comfortably.</p> <ul style="list-style-type: none"> <li>• 60% Cotton, 40% Polyester.</li> <li>• Teflon fabric protector; protects from stains.</li> <li>• Zipped pocket at front (wearer's left side).</li> <li>• Hidden-button placket.</li> </ul>		
LADIES'	<b>Corpo T-shirt</b>	<b>454431</b> • XS, S, M, L, XL, 2XL	Black (90), Heather Grey (27)
	 <p>Casual T-shirt for everyday wear.</p> <ul style="list-style-type: none"> <li>• 95% Cotton, 5% Spandex Jersey.</li> </ul>		
LADIES'	<b>Ladies' Off-Road T-shirt</b>	<b>454528</b> • XS, S, M, L, XL, 2XL	Navy (89), Black (90)
	 <p>Casual T-shirt for everyday wear.</p> <ul style="list-style-type: none"> <li>• Black: 95% Cotton, 5% Polyester Jersey.</li> <li>• Navy: 60% Cotton, 35% Polyester, 5% Spandex.</li> <li>• Artwork at left chest and at back.</li> </ul>		
KIDS'/TEEN	<b>Youth Estd T-shirt</b>	<b>454556</b> • 3-4, 5-6, 7-8, 10-12, 14-16	Navy (89), Black (90)
	 <p>Casual T-shirt for everyday wear.</p> <ul style="list-style-type: none"> <li>• 100% Cotton.</li> <li>• Artwork at center front and at back.</li> </ul>		

# CASUAL WEAR

MEN'S	<b>Can-Am Utility Overshirt</b>	<b>454552</b> • S, M, L, XL, 2XL, 3XL	Camo (37), Black (90)
	 <p>Can-Am Utility Overshirt with 2 chest flap pockets and 2 hand pockets.</p> <ul style="list-style-type: none"> <li>• 90% Acrylic, 10% Sheep's Wool.</li> <li>• Heavy shirt: 300 gsm.</li> <li>• Body lining with Micro-sherpa 185 gsm.</li> <li>• Stretchable.</li> <li>• DWR finish (durable water-repellent).</li> <li>• Garment wash.</li> <li>• Can-Am-branded snaps at center front, pockets and cuff.</li> </ul>		




# HEADWEAR

MEN'S	<b>Can-Am 5-Panel Cap</b>	<b>445432</b> • One size	Army Green (77), Black (90)
	 <p>Lightweight ripstop Can-Am 5-panel cap.</p> <ul style="list-style-type: none"> <li>• Snapback closure at back.</li> <li>• Sewn welded Can-Am patch and flag label.</li> </ul>		

# ACCESSORIES

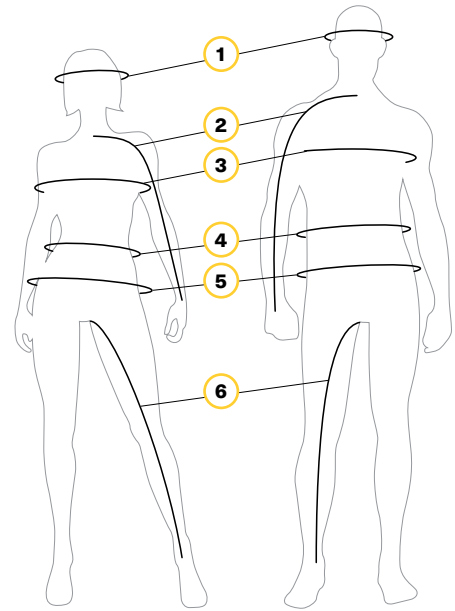
UNISEX	<b>Can-Am Steer Gloves</b>	<b>446329</b> • S, M, L, XL, 2XL, 3XL	Red (30), Pink (36) Deep Purple (42), Blue (80), Army Green (77), Black (90)
	 <p>The Can-Am Steer Glove is designed to be durable while offering a high level of ventilation and comfort in the hottest environments.</p> <ul style="list-style-type: none"> <li>• 75% Nylon, 15% Polyurethane, 9% Chloroprene Rubber.</li> <li>• Molded Neoprene for fitted cuffs.</li> <li>• Articulated fingers for easier movements.</li> <li>• Injected TPR on knuckles for protection.</li> <li>• Clarino® nash layers on the palm for durability and comfort.</li> <li>• Touch-screen at index and thumb.</li> <li>• Ventilated air mesh fabric.</li> </ul>		

UNISEX	<b>Can-Am Tube</b>	<b>454563</b> • One size	Sand (03), Camo (37)
	 <p>Multipurpose, stretchy and comfortable tubular headwear.</p> <ul style="list-style-type: none"> <li>• 88% Polyester, 12% Spandex.</li> <li>• 12 different configurations: bandana, headband, balaclava and more.</li> </ul>		

# HOW TO MEASURE

- For best results, have someone else take measurements.
- Measure body in underwear.
- Tape must be snug but not tight.
- If measurements fall between two sizes, order the larger size.

- 1 Head** Around your head, from the center of the forehead, above the ears and over the natural bump at the back of the head.
- 2 Arm Length** Let the hands hang down on the side in a slightly bent position. Measure from the center of the back of your neck, along the length of your arm, to the wrist.
- 3 Chest / Bust** Measure under your arms, around the fullest part of your chest.
- 4 Waist** Measure around your natural waistline, keeping one finger between the tape and body.
- 5 Hips** Across the fullest part of the seat.
- 6 Inseam** Without shoes, from crotch to the floor.



## What code represents your size?

1. Find your size.
2. The corresponding code is **THE CODE** you use to complete the part number on your order. **Example:** 440227\_\_90 Size: M = Code "06", therefore 4402270690

SIZE	CODE	SIZE	CODE	SIZE	CODE	SIZE	CODE	SIZE	CODE	SIZE	CODE	SIZE	CODE
One Size	00	LT	10	3XLT	17	3	22	9	29	16	35	10-12	49
XS	02	XL	12	4XL	18	4	23	10	30	18	78	14-16	50
S	04	XLT	13	4XLT	19	5	24	11	31	3-4	79	S/M	72
M	06	2XL	14	5XL	88	6	25	12	32	5-6	52	M/L	91
MT	07	2XLT	15	1	20	7	27	13	33	6-8	48	L/XL	73
L	09	3XL	16	2	21	8	28	14	34	7-8	54		

## Apparel & Sportswear

### Men 170–182 cm

	XS	S	M	L	XL	2XL	3XL	4XL	5XL
<b>Chest</b>	81-86	88-92	96-101	107-112	117-122	127-132	137-142	147-152	157-162
<b>Waist</b>	66-71	74-79	81-86	91-97	101-107	112-117	122-127	132-137	142-147
<b>Hips (seat)</b>	81-86	88-92	96-101	107-112	117-122	127-132	137-142	147-152	157-162
<b>Arm length</b>	76	79	81	84	86	89	89	91	91
<b>Inseam</b>	79	80	81	81	81	81	81	81	81

### Men's Tall 185–195 cm

	MT	LT	XLT	2XLT	3XLT	4XLT
<b>Chest</b>	96-101	107-112	117-122	127-132	137-142	147-152
<b>Waist</b>	81-86	91-97	101-107	112-117	122-127	132-137
<b>Hips (seat)</b>	96-101	107-112	117-122	127-132	137-142	147-152
<b>Arm length</b>	84	86	89	91	94	97
<b>Inseam</b>	86	86	86	86	86	86

### Ladies 160–176 cm

	XS	S	M	L	XL	2XL	3XL
<b>Chest</b>	83-88	88-92	94-99	101-107	112-117	122-127	132-142
<b>Waist</b>	69-74	74-79	79-84	86-91	96-101	107-112	117-127
<b>Hips (seat)</b>	91-97	96-101	101-107	109-114	112-124	122-135	140-150
<b>Arm length</b>	74	76	76	79	79	81	81
<b>Inseam</b>	76	76	76	76	76	76	76

### Ladies' Tall 179–182 cm

	MT	LT	XLT
<b>Chest</b>	94-99	101-107	112-117
<b>Waist</b>	79-84	86-91	96-101
<b>Hips (seat)</b>	101-107	109-114	112-124
<b>Arm length</b>	81	83	84
<b>Inseam</b>	81	81	81

### Ladies Plus size

	X	1X	2X	3X
<b>Chest</b>	109-117	117-124	127-135	137-145
<b>Waist</b>	94-107	101-109	112-119	122-130
<b>Hips (seat)</b>	114-122	122-130	132-140	142-150
<b>Arm length</b>	79	79	81	81
<b>Inseam</b>	76	76	79	79

## Gloves (Measure Palm Width)

Men	S	M	L	XL	2XL	3XL	Ladies	S	M	L	XL	2XL
Palm (cm)	8	9.5	10	11.5	13	14		7	8	9	10	11.5

## Helmets

Men & Ladies	XS	S	M	L	XL	2XL	3XL
Head (cm)	53-54	55-56	57-58	59-60	61-62	63-64	65-66



# BRP REIMAGINES THE WAY YOU ACCESS YOUR WORLD

Can-Am is one of many success stories from BRP, the global company behind some of the most daringly innovative products and experiences that move you. Because it's not about the destination, it's about the journey — yours.

Discover our brands:

***ski-doo*** ***LYNX*** ***SEA-DOO*** ***can-am*** **ROTAX** **ALUMACraft** **MANITOU** **QUINTREX**

[www.brp.com](http://www.brp.com)





CANAMOFFROAD.COM

